

At the Ideal Group, the word 'green' not only signifies springtime, growth and nature, nor is it merely the colour of growing grass and new leaves, 'green' is a way of life.

Ideal Greens is our pledge to nature and life. It is our humble initiative to maintain the equilibrium in the eco system and preserve the world in which we live. It is our way of trying to retain the balance between green spaces, blue skies, water and thoughtful architecture.

In short, Ideal Greens is all about respecting nature and living life within its bounty.







Ideal Greens. Envisaged by the Ideal Group, designed by celebrated architect Hafeez Contractor and landscaped by LSG group of USA.

Kolkata's largest, Green, gated residential community spread across 11.7 acres.

852 air-conditioned apartments offering options of 2, 3 and 4 BHK.

Planned across 10 towers of varying height between G+14 and G+18 floors.

Presence of a large natural water body to add to the 82% landscaped open space.

ZRICKS.COM

Ideal Greens.

Acres of silence. Envelopes of chlorophyll.
And the harvest of a life well lived.

www.Zricks.com



Ideal Greens.

Where the colour of the
main blossom is green!



At Ideal Greens, living is not within boxed apartments. It is completely out-of-the-box!

Ideal Greens offers 2/3/4 BHK and duplex air-conditioned apartments, ranging between 1,220 sq. ft and 3,525 sq. ft.

Ideal Greens is built in such a manner that it overlooks the sprawling green golf courses at the Tollygunge Club and the Royal Calcutta Golf Club.



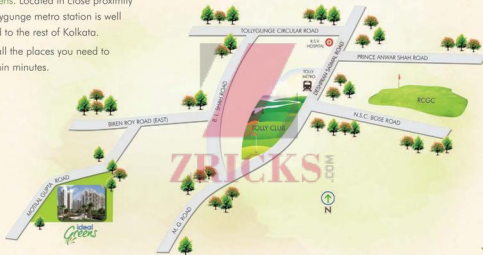
At Ideal Greens,
convenience is a synonym.

South Kolkata. The green cover of the city.

Ideal Greens. Located in close proximity
to the Tollygunge metro station is well
connected to the rest of Kolkata.

Close to all the places you need to
reach within minutes.

Location map



- 7 minutes from the Tollygunge metro station • 15 minutes from Rashbehari-Chetla crossing (Kalighat metro station)
- 7 minutes from the proposed Behala Chowrasta metro station

852 different families. One community. The club that binds the community together. Offering a banquet hall with spacious and manicured landscaped gardens to celebrate special occasions and festivals.



The Club Plush also has the following attractions:



Banquet hall
with party lawn



Swimming
pool



Indoor
badminton court



Table tennis



Squash



Pool table



Children's
games room



Jogging track



Well-equipped
gymnasium



Cricket field

At Ideal Greens, there is no need to step out.

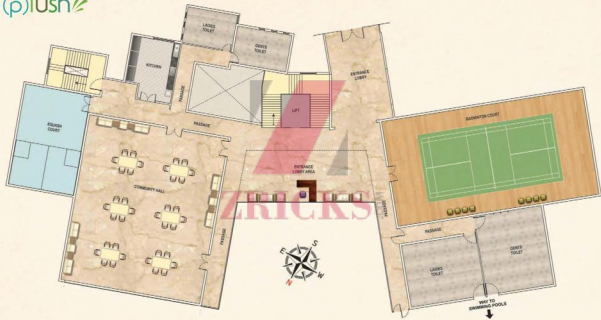
Every hour spent at home is a happy hour.

Complete with an inhouse resident's club, gymnasium,
cricket field and jogging track.

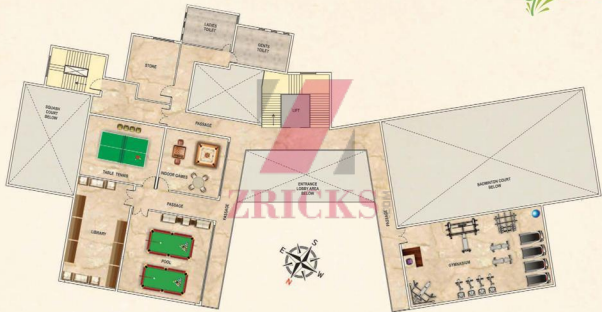




Ground Floor Plan



First Floor Plan





Ideal Greens.

Where wellness is a way of life!



Ideal Greens will be built in conformance to green building standards as laid down by the Indian Green Building Council (IGBC) and will pursue a 'Gold' rating under the IGBC Green Homes rating system.

Green features at Ideal Greens are focused on one central aspect: healthy living and lesser consumption of natural resources.

Starting from the diligent sourcing of raw materials to the optimum utilization of water and energy, Ideal Greens truly has a green conscience.

From features such as rainwater harvesting and recycling of waste water for landscaping and flushing purposes to enhanced indoor air quality, natural light during the day and the sensitivity to the environment, Ideal Greens will be the first-of-its-kind socially futuristic and sustainable lifestyle model.

Motilal Gupta Road



Site Plan



- 01. Main entry
- 02. Parking
- 03. Children's play area
- 04. Ramp to basement
- 05. Water feature
- 06. Seating
- 07. Sculpture
- 08. Existing waterbody
- 09. Walkway
- 10. Deck
- 11. Basketball court
- 12. Flower bed
- 13. Banglow lawn
- 14. Wooden deck
- 15. Kid's pool
- 16. Lap pool
- 17. Interactive water feature
- 18. Jacuzzi
- 19. Club
- 20. Cricket field
- 21. Space for services



1st - 6th
Floor Plan

AREA STATEMENT		
Flat No.	Type	Area (sq. ft)
A*	3 BHK	1,710
B*	3 BHK	1,720
C	2 BHK	1,240
D#	3 BHK	1,710
E#	3 BHK	1,720
F	2 BHK	1,220

* Not available on 1st Floor
Not available on 1st & 2nd Floor

7th, 10th, 13th &
16th Floor Plan

AREA STATEMENT		
Flat No.	Type	Area (sq. ft)
A	3 BHK	1,830
B	3 BHK	1,835
C	2 BHK	1,355
D	3 BHK	1,820
E	3 BHK	1,830
F	2 BHK	1,325





Specifications

WALLS

- Internal and external: RCC
- Common area: paint
- External: textured point

FLOORING

- Tiles in living rooms and bedrooms
- Marble / Tiles / Stone in all common areas

ELECTRICAL

- Concealed copper wiring
- Sufficient light and power points
- Television / Telephone points in living / dining room and all bedrooms
- A.C. of reputed brand in living / dining room and all bedrooms

KITCHEN

- Dado of ceramic tiles
- Granite platform

TOILET

- Concealed pipeline using standard material
- Ceramic tiles dado
- Tiled flooring
- CP fittings of superior brands

DOORS

- Flush doors with accessories

WINDOWS

- Aluminium windows with grill

LIFT

- Elevators of a leading brand in each tower

GENERATOR

- For common area lighting and one lift in each tower
- Standby generator for light and fan points of all flats

OTHER FACILITIES

- 24 hour water supply
- Adequate car parking space for residents and visitors
- CCTV for enhanced security



Developed by

IDEAL®
pillars of trust

Ideal Real Estates Pvt. Ltd.

50, Jawaharal Nehru Road, 11th Floor, Kolkata 700 071
sales@ideal.in | www.ideal.in

Marketing Agent

ZRICKS REALTORS
Where trust comes first

033 4040 1010 / 6620 1010

Architects

**Architect
Hafeez
Contractor**

S&S
SANJON SEN & ASSOCIATES
KOLKATA

Structural Consultant

JW
JW CONSULTANTS LLP
Formerly J.S. Associates

MEP Consultant

MEP
CONSULTING ENGINEERS

Landscape Consultant

LS
LANDSCAPE ARCHITECTS

Preferred Financier

ICICI Bank

Disclaimer: this document is not a legal offering. It only describes the intent, purpose & concept of Ideal Estates. All the areas' dimensions' layout' elevations' pictures are only indicative and not as per work. All the details are subject to change, alteration and modification as per the management's discretion without any prior intimation.

www.Zricks.com